

# LANDSCAPE CONCEPT

## SWISS HILLS LANDSCAPING



VIEW OF REAR YARD FROM CREEK  
IMAGE NTS

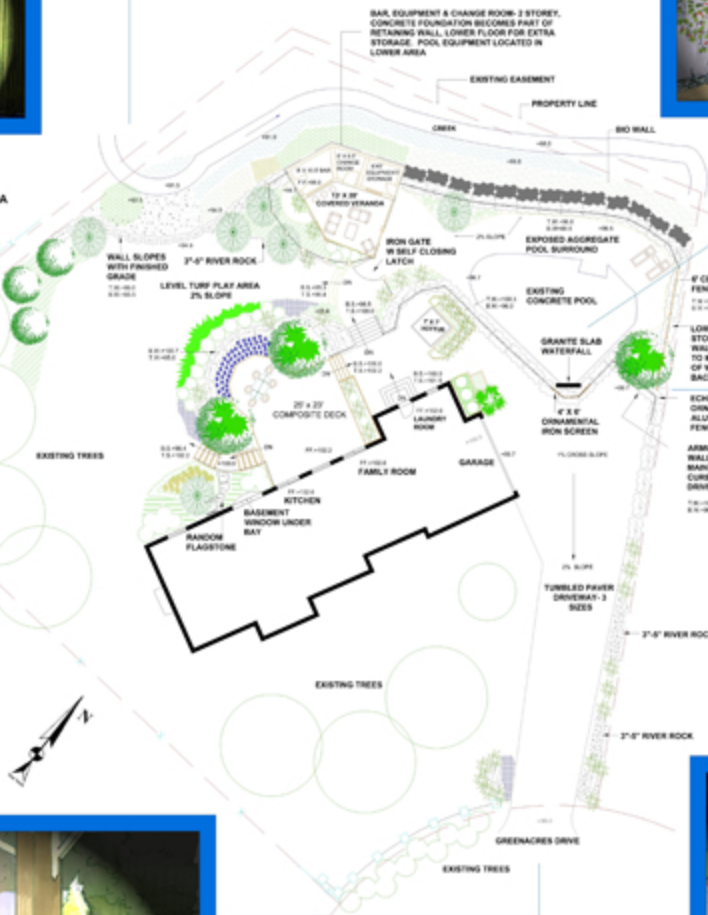
THE AMPLE COMPOSITE DECK PROVIDES A PRIVATE DINING AREA WITH UNOBSTRUCTED VIEWS OF THE CREEK, WHILE PROVIDING SUFFICIENT SPACE FOR LARGER GATHERINGS. STAIRS LINK THE DECK TO THE LAWN AREA, HOT TUB AND POOL. THE THREE HARDSCAPE MATERIALS SPECIFIED DESIGNATE EACH AREA, WHILE COMPLEMENTING EACH OTHER, THE ARCHITECTURE OF THE HOME AND THE NATURAL SURROUNDINGS. THE CUSTOM DESIGN TWO LEVEL POOL CABANA FEATURES A BAR AREA, EQUIPMENT/STORAGE AREA, CHANGE ROOM AND COVERED VERANDAH. THE CEDAR BATTON BOARD SIDING PROVIDES A WARM ATMOSPHERE WHILE THE STONE FACADE MIMICS THE ARMOUR STONE RETAINING WALL. 8" ALUMINIUM FENCING SECTIONS BETWEEN 1" X 1" CEDAR POST WITH SELF LATCHING GATE PROVIDE NECESSARY SECURITY TO THE POOL AREA. THE CONCRETE FOUNDATION DOUBLES AS A RETAINING WALL, MAXIMIZING THE LIMITED SPACE, WHILE THE BASEMENT PROVIDES AN AMPLE AREA FOR STORAGE OF POOL EQUIPMENT.

THE ELEVATION OF THE LAWN AREA IS RAISED TO ALLOW FOR A LEVEL PLAY AREA FOR THE CHILDREN WHILE SLOWING SURFACE DRAINAGE. THE VARIOUS NATIVE PLANTS PROVIDE EROSION CONTROL AND SEASONAL COLOUR. THE VANDERWOLF PINE FRAME THE VIEW OF THE CREEK FROM THE UPPER DECK AND HOUSE. THE RIVER ROCK AREA ALLOWS ACCESS FOR THE CHILDREN TO EXPLORE THE AQUATIC LIFE OF THE CREEK WHILE ALSO PROVIDING STABLE FOOTING.



VIEW OF WATER FEATURE  
IMAGE NTS

THE AMPLE COMPOSITE DECK PROVIDES A PRIVATE DINING AREA WITH UNOBSTRUCTED VIEWS OF THE CREEK, WHILE PROVIDING SUFFICIENT SPACE FOR LARGER GATHERINGS. STAIRS LINK THE DECK TO THE LAWN AREA, HOT TUB AND POOL. THE THREE HARDSCAPE MATERIALS SPECIFIED DESIGNATE EACH AREA, WHILE COMPLEMENTING EACH OTHER, THE ARCHITECTURE OF THE HOME AND THE NATURAL SURROUNDINGS. THE CUSTOM DESIGN TWO LEVEL POOL CABANA FEATURES A BAR AREA, EQUIPMENT/STORAGE AREA, CHANGE ROOM AND COVERED VERANDAH. THE CEDAR BATTON BOARD SIDING PROVIDES A WARM ATMOSPHERE WHILE THE STONE FACADE MIMICS THE ARMOUR STONE RETAINING WALL. 8" ALUMINIUM FENCING SECTIONS BETWEEN 1" X 1" CEDAR POST WITH SELF LATCHING GATE PROVIDE NECESSARY SECURITY TO THE POOL AREA. THE CONCRETE FOUNDATION DOUBLES AS A RETAINING WALL, MAXIMIZING THE LIMITED SPACE, WHILE THE BASEMENT PROVIDES AN AMPLE AREA FOR STORAGE OF POOL EQUIPMENT.



THE ARMOUR STONE RETAINING WALL PROVIDES A BEAUTIFUL BACKDROP TO THE POOL AREA AND ALLOWS THE INTEGRATION OF A GRANITE SLAB WATERFEATURE.

THE HAMMER HEAD DRIVEWAY PROVIDES AN EASIER TRANSITION FOR VEHICLES INTO GARAGE AREA. THE CUSTOM IRON SCREEN PROVIDES PRIVACY TO THE POOL AREA FROM THE N.E. NEIGHBOUR WHILE PROVIDING A PROMINENT VISUAL SIGNAL WHEN BACKING OUT VEHICLES FROM THE GARAGE.

THE THREE LEVEL CEDAR PLANTER ADJACENT TO THE GARAGE PROVIDES A DISPLAY OF SEASONAL COLOUR, SIGNALS A TRANSITION TO THE BACKYARD WHILE SOFTENING THE HARDSCAPE. THE HOT TUB AREA AND DRIVEWAY MAINTAIN THE SAME ELEVATION ALLOWING FOR AN EASIER TRANSITION BETWEEN THE TWO SPACES, WHILE PROVIDING AN AREA FOR SNOW ACCUMULATION IN WINTER.



VIEW OF VERANDA, UTILITY ROOM & POOL  
IMAGE NTS

A WIDER DRIVEWAY ENTRANCE IS ACHIEVED BY REMOVING THE S.E. ENTRANCE BRICK PILLARS AND FENCE. THE TUMBLE PAVERS MIMIC THE SQUARE CUT RANDOM FLAGSTONE ENTRANCE WALKWAY. THE NEW PLANTING DESIGN AND ARMOUR STONE DETAIL PROVIDE A SENSE OF ARRIVAL TO THIS AREA, WHILE THE REPETITION OF THE PLANTING STYLE ON THE S.W. SIDE OF THE DRIVEWAY LINKS BOTH AREAS. STONE BALLARDS ON EITHER SIDE OF DRIVEWAY PROVIDE SAFETY LIGHTING TO THE AREA. THE STREET NUMBER WILL BE LOCATED ON BRICK COLUMN ADJACENT TO DRIVEWAY ON THE S.E. SIDE. THE VERTICAL SECTION ALLUMINIUM FENCE IS REPEATED FROM THE POOL AREA BETWEEN THE EXISTING BRICK COLUMNS.



VIEW OF DRIVEWAY  
IMAGE NTS

# RESIDENTIAL DESIGN

SCALE 1/16"=1'

DESIGNER N. WARREN

APRIL 13, 2007